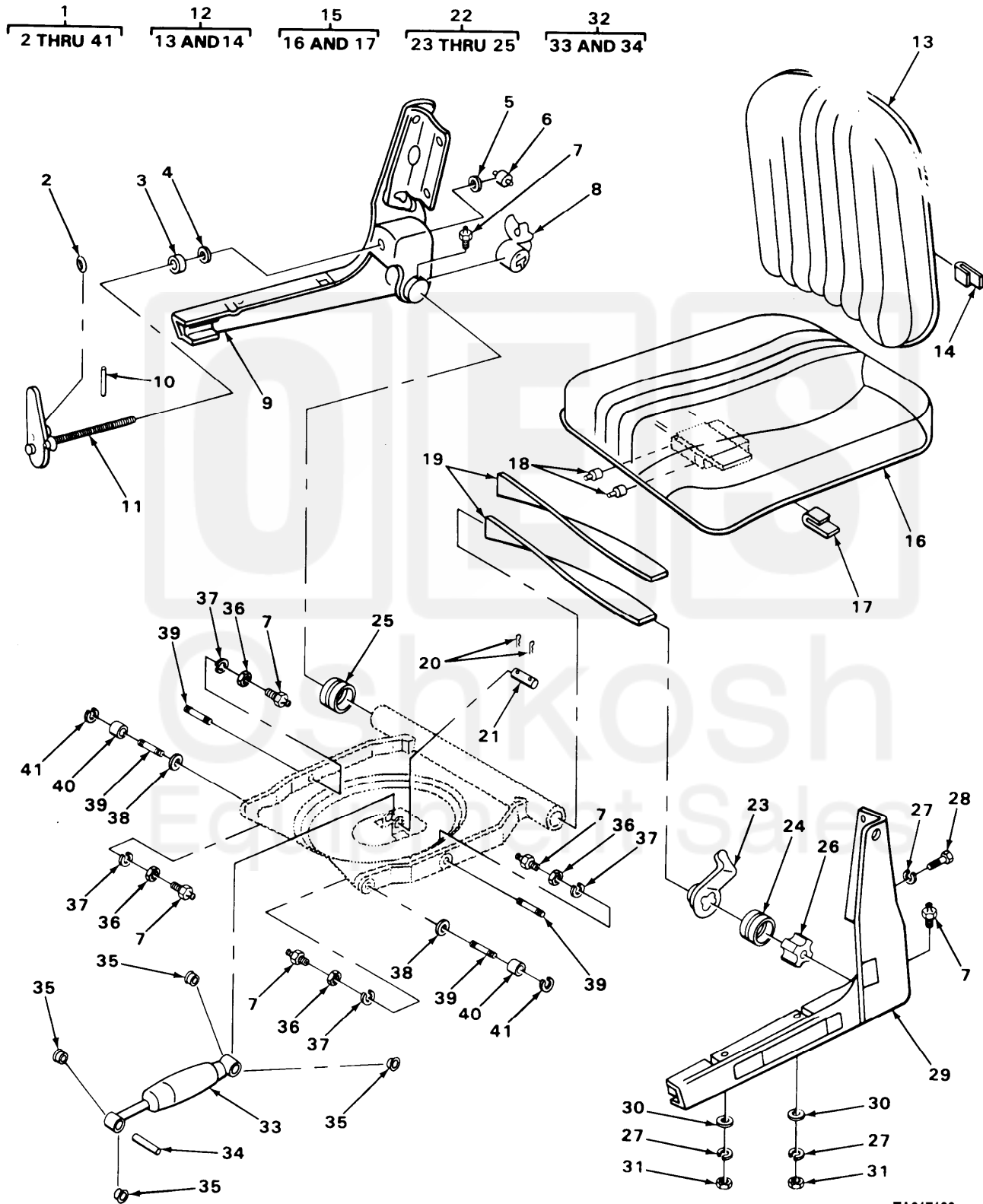


SECTION II

TM 9-2320-273-24P



TA217182

FIGURE 253. DRIVER'S SEAT ASSEMBLY.

Current part is item (10,15) on diagram. Available at www.oshkoshequipment.com

SECTION II (1)	ITEM (2)	SMR (3)	FSCM (4)	TM9-2320-273-24P PART NUMBER	(5)	DESCRIPTION AND USABLE ON CODE (UOC)	(6)	QTY
GROUP:1806 UPHOLSTERY SEATS AND CARPET								
FIGURE 253. DRIVER'S SEAT ASSEMBLY.								
1	PAOFF	71044	64034-001	SEAT ASSEMBLY,DRIVE				1
2	PAFZZ	71044	26445-802	.SPRING,HELICAL,EXTE				1
3	PAFZZ	71044	23308-801	.BEARING,BALL,THRUST				1
4	PAFZZ	71044	26827-801	.WASHER,FLAT				1
5	PAFZZ	71044	353034-801	.WASHER,FLAT				1
6	PAFZZ	71044	25810-801	.PIN,SHOULDER,HEADLE				1
7	PAOZZ	71044	27193-801	.FITTING,LUBRICATION				8
8	PAFZZ	71044	27160-802	.YOKE,ADJUSTER				1
9	PAFZZ	71044	42375-004	.SIDE PANEL ASSEMBLY				1
10	PAFZZ	71044	20816-801	.PIN				1
11	PAFZZ	71044	64999-002	.SCREW AND LEVER,ADJ				1
12	PAOOO	71044	28630-478	.CUSHION,SEAT BACK,V				1
13	PBOZZ	71044	28346-802	..BASE,SEAT,BACK,CUSH				1
14	PAOZZ	71044	27040-801	..CLIP				8
15	PAOZZ	71044	25998-592	.CUSHION,SEAT				1
16	PBOZZ	71044	25996-806	..SEAT,VEHICULAR				1
17	PAOZZ	71044	27040-801	..CLIP				4
18	PAFZZ	71044	27194-801	.BUMPER,SPECIAL				4
19	PBFZZ	71044	61153-001	.SET,TORSION BAR TWO PER SET				1
20	PAFZZ	71044	22525-801	.PIN,SPRING				2
21	PBFZZ	71044	25789-802	.SHAFT,HINGE				1
22	BFFF	71044	34044-001	.LEVER,MANUAL CONTRO				1
23	PAFZZ	71044	31015-801	..INDICATOR,RIDE LEVE				1
24	PPFZZ	71044	27191-801	..BEARING,HOUSING				1
25	PPFZZ	71044	25775-801	..BEARING,HOUSING				1
26	PPFZZ	71044	27159-802	.RETAINER,TORSION BA				1
27	PAFZZ	71044	353024-801	.WASHER,LOCK				12
28	PAFZZ	71044	351152-801	.SCREW,CAP,HEXAGON				4
29	PBFZZ	71044	42372-003	.PANEL ASSEMBLY,SEAT				1
30	PAFZZ	71044	353043-801	.WASHER,FLAT				4
31	PAFZZ	71044	351119-801	.NUT,PLAIN,HEXAGON				8
32	PAOOO	71044	60475-001	.SHOCK ABSORBER,DIRE				1
33	XAOZZ	34623	MA277A-21002	..SHOCK ABSORBER ASSY WITH BEARINGS				1
34	PBOZZ	71044	25790-802	..SHAFT,HINGE				2
35	PAOZZ	71044	22506	.BEARING,SLEEVE				4
36	PAFZZ	96906	MS51967-8	.NUT,PLAIN,HEXAGON				6
37	PAFZZ	71044	353019-801	.WASHER,LOCK				6
38	PAFZZ	71044	26988-801	.WASHER,FLAT				4
39	PAFZZ	71044	25777-801	.STUD,SHOULDERED				6
40	PAFZZ	71044	25690-801	.ROLLER,LINEAR-ROTAR				4
41	PAFZZ	71044	25989-801	.RING,RETAINING				10

END OF FIGURE

Current part is item (10,15) on diagram. Available at www.oshkoshequipment.com

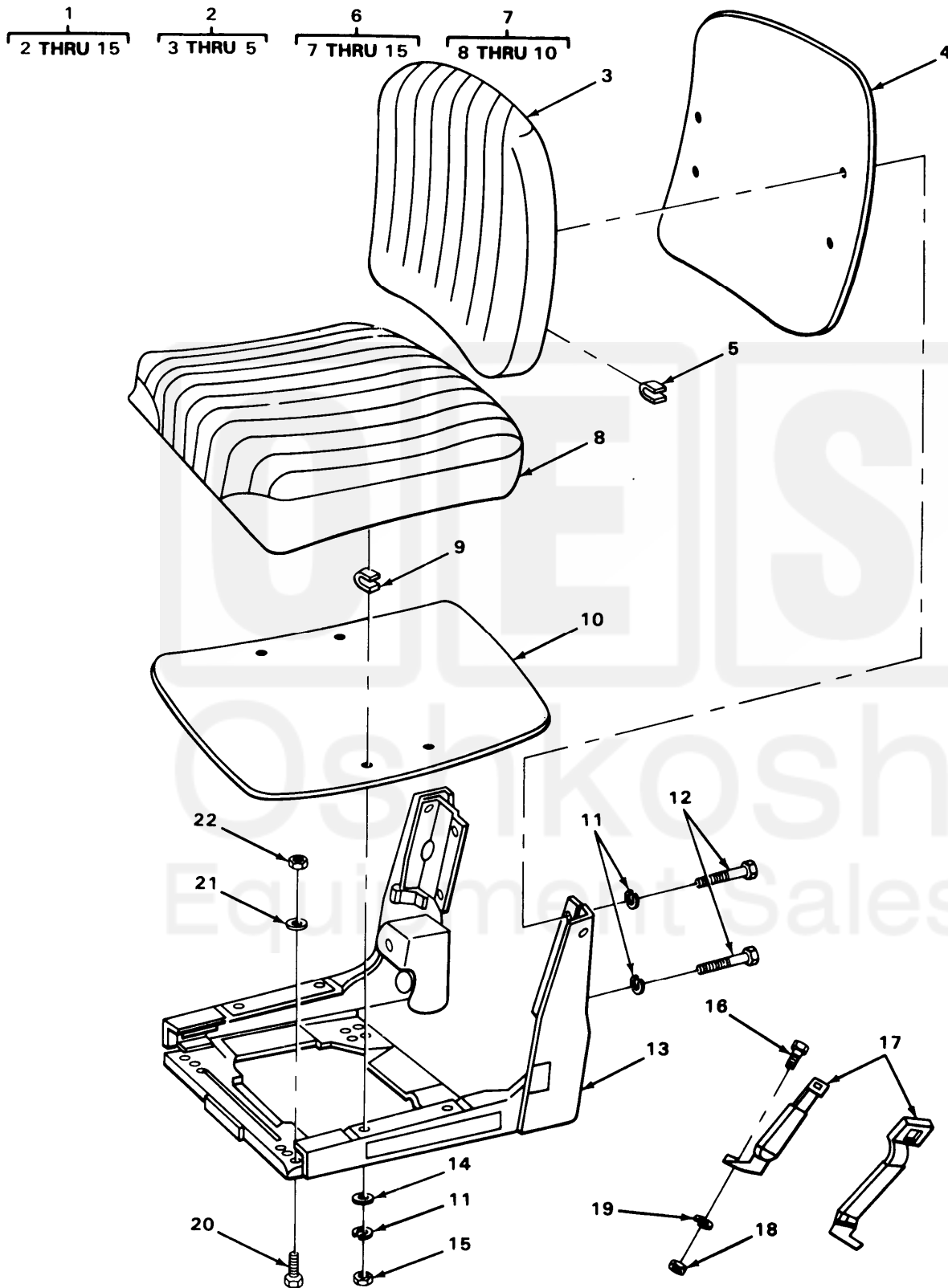


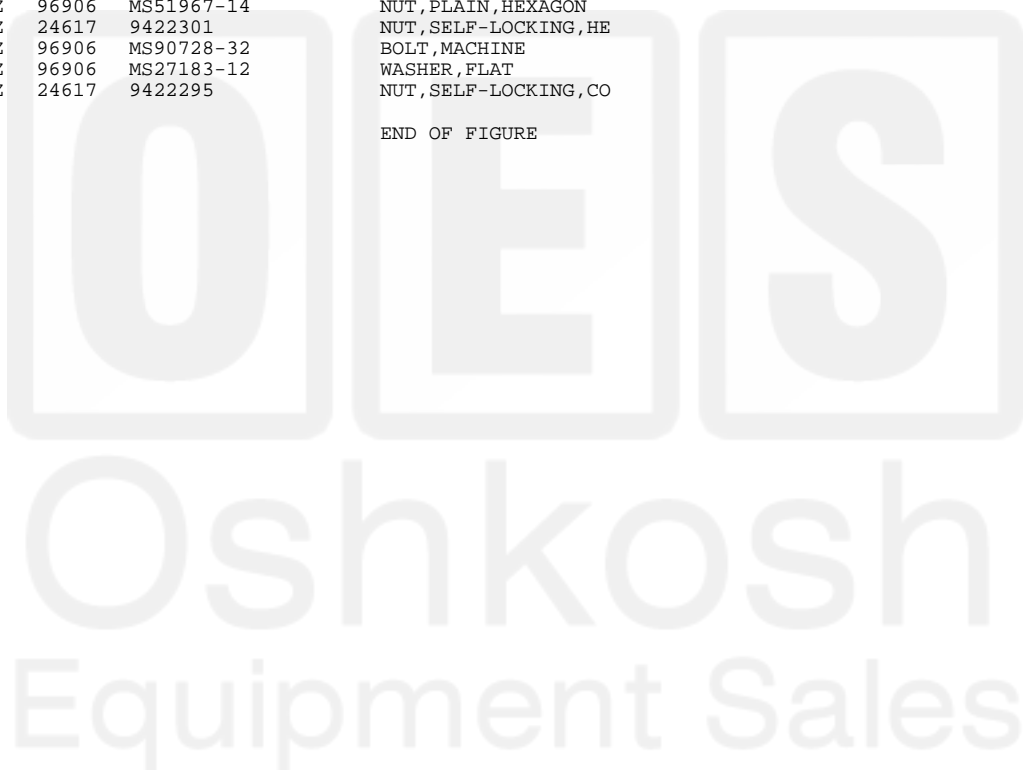
FIGURE 255. COMPANION SEAT ASSEMBLY.

TA217184

Current part is item (10,15) on diagram. Available at www.oshkoshequipment.com

SECTION (1)	II (2)	TM9-2320-273-24P (3)	(4)	(5)	(6)
ITEM NO	SMR CODE	FSCM	PART NUMBER	DESCRIPTION AND USABLE ON CODE (UOC)	QTY
				GROUP:1806 UPHOLSTERY SEATS AND CARPET	
				FIGURE 255. COMPANION SEAT ASSEMBLY.	
1	PFOOO	71044	63184-005	SEAT, VEHICULAR	1
2	PAOOO	71044	28630-478	.CUSHION, SEAT BACK	1
3	PBOZZ	71044	28630-479	..COVER, SEAT	1
4	PBOZZ	71044	28346-802	..BASE, SEAT, BACK, CUSH	1
5	PAOZZ	71044	27040-801	..CLIP, FASTENER	6
6	PAOOO	71044	63184-007	.SEAT, VEHICULAR	1
7	PAOOO	71044	27424-035	..CUSHION, SEAT	1
8	PAOZZ	34623	MA63-21153	...CUSHION, SEAT	1
9	PAOZZ	71044	27040-801	...CLIP, FASTENER	6
10	PBOZZ	71044	25996-806	..SEAT, VEHICULAR	1
11	PAOZZ	96906	MS35338-45	..WASHER, LOCK	8
12	PAOZZ	71044	351152-801	..SCREW, CAP, HEXAGON	4
13	PAFZZ	71044	63186-003	..FRAME, SEAT	1
14	PAOZZ	71044	353043-801	..WASHER, FLAT	4
15	PAOZZ	71044	351119-801	..NUT, PLAIN, HEXAGON	4
16	PAOZZ	24617	9427615	SCREW, CAP, HEXAGON	2
17	PBOZZ	29944	MVSS 209	BELT, VEHICULAR SAFE	1
18	PAOZZ	96906	MS51967-14	NUT, PLAIN, HEXAGON	2
19	PAOZZ	24617	9422301	NUT, SELF-LOCKING, HE	2
20	PAFZZ	96906	MS90728-32	BOLT, MACHINE	4
21	PAFZZ	96906	MS27183-12	WASHER, FLAT	4
22	PAFZZ	24617	9422295	NUT, SELF-LOCKING, CO	4

END OF FIGURE



Current part is item (10,15) on diagram. Available at www.oshkoshequipment.com